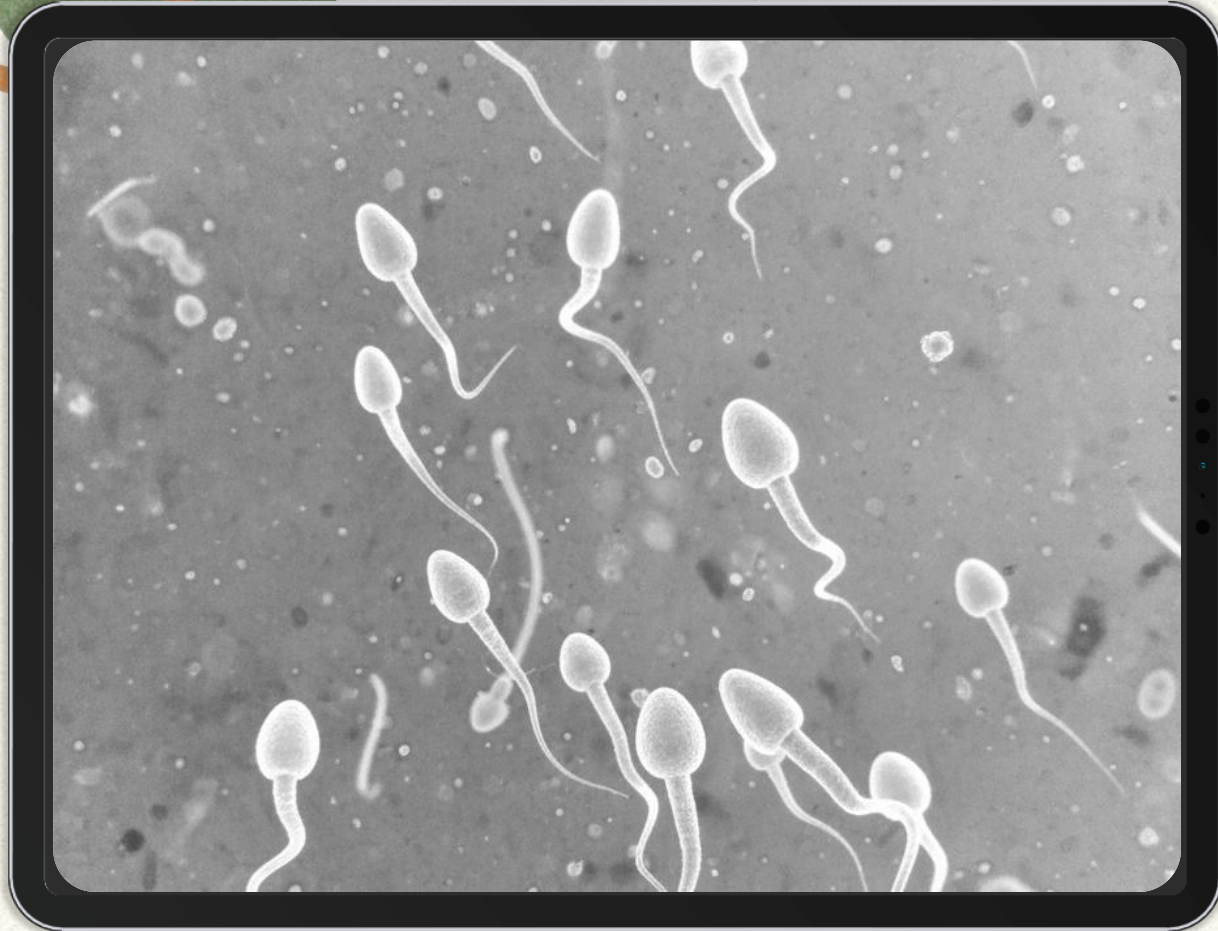




# Lesson 8

## The Male Reproductive System



Sperm is the male reproductive cell .

The Male reproductive system is made up of several organs which includes the testes, ducts , accessory glands and Penis. It specifically responsible for producing sperm cells and hormones . A sperm cell is needed for fertilize an egg cell . Hormones and responsible for the development of adult male characteristics .

A male can produce numerous sperm cells. An average man can have approximately 5,000,000 in a single drop of a semen , out of these millions of sperm cells, only one is needed for fertilize an egg cell.

## Functions of the different Parts of the Male Reproductive System

The different parts of the male reproductive system have their specific functions.

### *Penis*

Penis is the external male organ with a tip called **glans**. It is covered with foreskin that may be removed through circumcision.

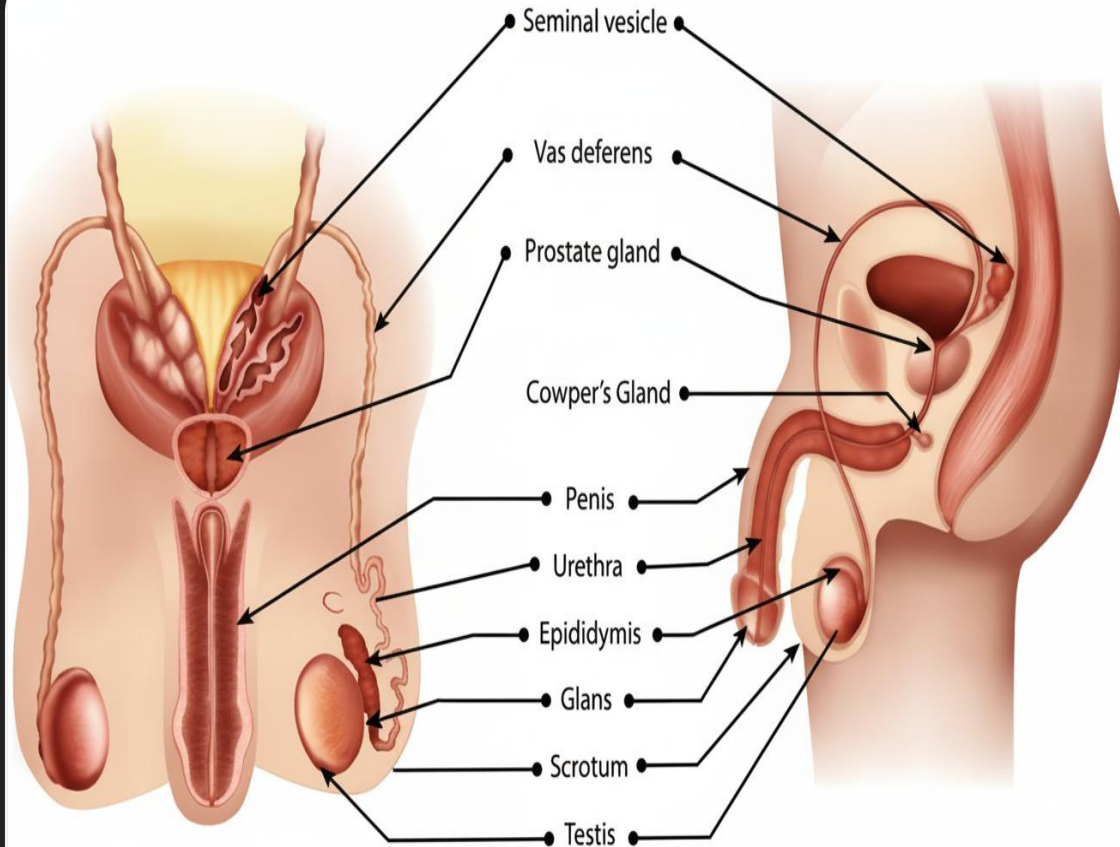
### *Scrotum*

Scrotum is pair of pouch like sacs that contains the testes. It also controls the testes

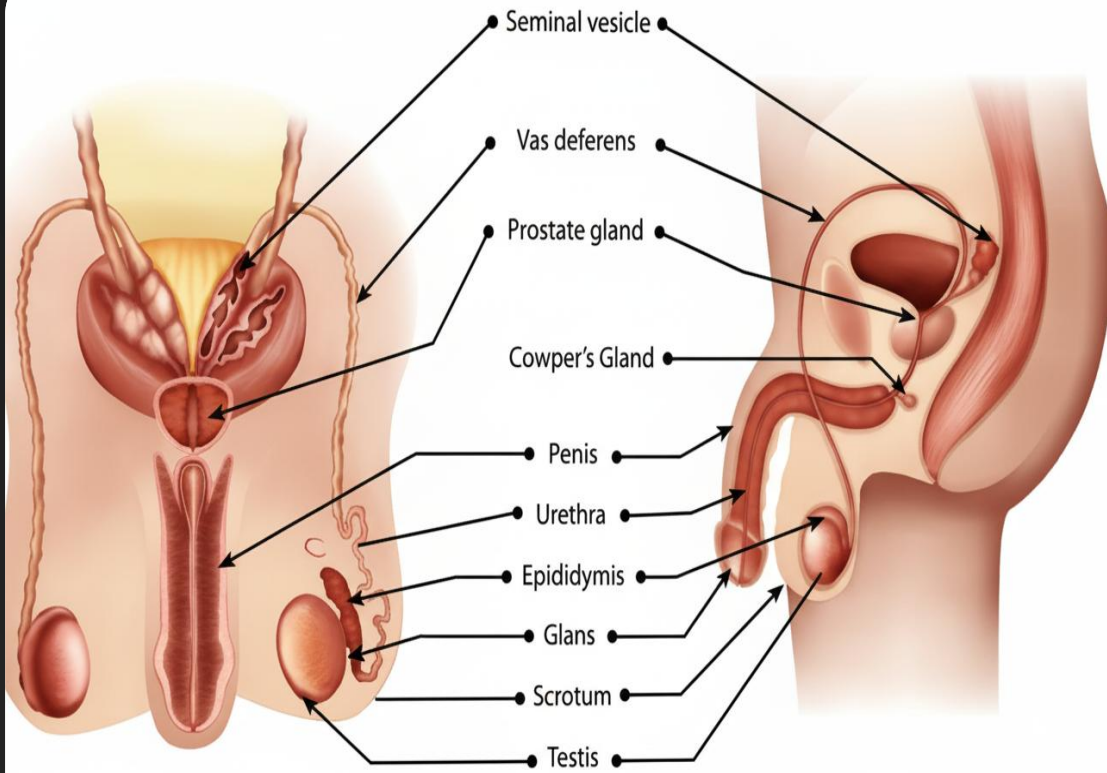
‘ temperature because they must be slightly cooler than the body to produce the sperm cells.

### *Testes*

Testes(singular, testis) are the glands that produce the sperm cells and the male sex hormone called **testosterone**.



Parts of the Male Reproductive System



Parts of the Male Reproductive System

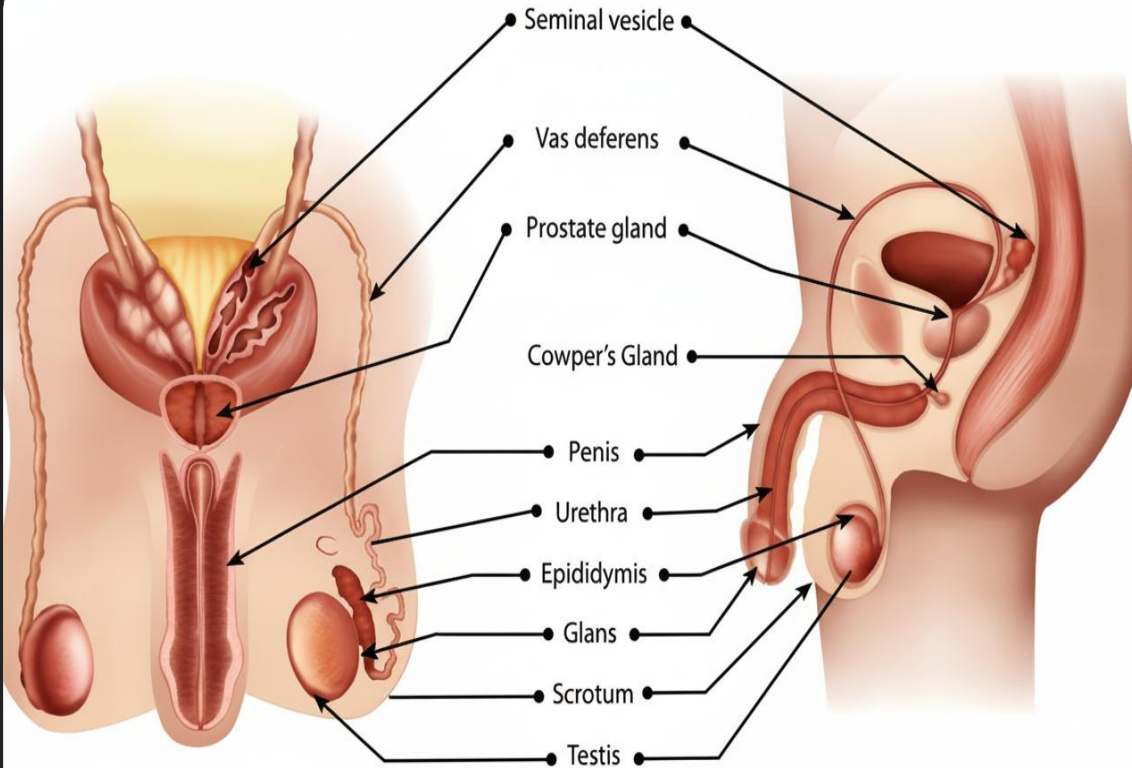
**Epididymis** is a narrow, coiled tube that stores sperm cells.

**Urethra** in males is the passageway of both urine from the urinary bladder and semen from the glands.

**Seminal Vesicles** are saclike pouches attached to the vas deferens. It contributes to the semen production, a sugar-rich fluid which provides energy for the sperm cells' motility.

**Vas Deferens** The vas deferens is a long, muscular tube that serves as the passageway of the sperm cells released from the testes. It also connects the testes to the seminal vesicle and the urethra.

**Cowper's Gland**, also called as the bulbourethral gland, is one of the two pea-sized organs found beneath the prostate gland. It is responsible for releasing fluid that flushes out foreign matters and neutralizes the acidic urine in the urethra.



*Cowper's Gland*, also called as the bulbourethral gland, is one of the two pea-sized organs found beneath the prostate gland. It is responsible for releasing fluid that flushes out foreign matters and neutralizes the acidic urine in the urethra

*Prostate gland* is a gland located between the bladder and the penis. It produced fluid that nourished and protect the sperm.

Parts of the Male Reproductive System

Let's Check! ✓

A. Match the part of the male reproductive system in Column A to its respective function in Column B.

A


- \_\_\_\_\_ 1. Scrotum
- \_\_\_\_\_ 2. Vas Deferens
- \_\_\_\_\_ 3. Seminal vesicle
- \_\_\_\_\_ 4. testes
- \_\_\_\_\_ 5. penis
- \_\_\_\_\_ 6. Epididymis
- \_\_\_\_\_ 7. Prostate gland
- \_\_\_\_\_ 8. urethra
- \_\_\_\_\_ 9. cowper's gland

B

- a. The tube that stores sperm cell
- b. Secrets fluid which nourishes the sperm
- c. The gland that releases the fluid that flushes out foreign matter and neutralizes acidic urine in urethra
- d. The passageway of urine and semen
- e. A pair of pouch like sacs that protect the testes
- f. Produces sugar-rich fluid that provides energy for the sperm cells' motility
- g. Glands that produce sperm cells and the male sex hormone called testosterone
- h. External male organ with a tip called glans
- i. The passageway of sperm coming the testes.



## B. Answer the Following questions

1. What do you think is the importance of circumcision?
  2. Why should the testis have lower temperature than the rest of the body?
- 



**Thanks !**